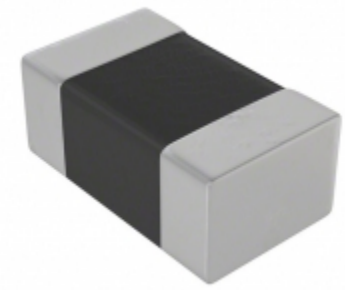


<b>CGJ4C2C0G2A821J060AA</b>	
Part Number	<a href="#">CGJ4C2C0G2A821J060AA</a>
Manufacturer	<a href="#">TDK Corporation</a>
Description	CAP CER 820PF 100V C0G 0805
Quantity Available	500 pcs in stock
Datasheets	
CGJ4C2C0G2A821J060AA Price	<a href="#">Request Price &amp; Lead Time Online</a> or Email us: <a href="mailto:Info@ariat-tech.com">Info@ariat-tech.com</a>


[GET A QUOTE](#)

Technical Information of CGJ4C2C0G2A821J060AA			
Manufacturer Part Number	<a href="#">CGJ4C2C0G2A821J060AA</a>	Category	<a href="#">Capacitors</a>
Manufacturer	<a href="#">TDK Corporation</a>	Description	CAP CER 820PF 100V C0G 0805
Package / Case	Tape & Reel (TR)	Quantity Available	500
Series	CGJ	Voltage - Rated	100V
Operating Temperature	-55°C ~ 125°C	Ratings	COTS
Mounting Type	Surface Mount, MLCC	Size / Dimension	0.080" L x 0.050" W (2.03mm x 1.27mm)
Height - Seated (Max)	-	Features	-
Capacitance	820pF	Tolerance	±5%
Applications	High Reliability	Lead Spacing	-
Package / Case	0805 (2012 Metric)	Temperature Coefficient	C0G, NP0
Thickness (Max)	0.028" (0.70mm)	Lead Style	-
Failure Rate	-	Packaging	Tape & Reel (TR)

CGJ4C2C0G2A821J060AA 500pcs New and Original in Stock, Find CGJ4C2C0G2A821J060AA Stock, Datasheet, PDF, Inventory at Ariat-Tech.com Online, Order CGJ4C2C0G2A821J060AA TDK Corporation with warrantied and confidence. RFQ CGJ4C2C0G2A821J060AA : [Info@Ariat-Tech.com](mailto:Info@Ariat-Tech.com)

Related parts for CGJ4C2C0G2A821J060AA				
Image	Part Number	Description	Manufacturer	Qty
	<a href="#">CGJ4C2C0G2A331J060AA</a>	CAP CER 330PF 100V C0G 0805	TDK Corporation	500 pcs
	<a href="#">CGJ4C2C0G2A151J060AA</a>	CAP CER 150PF 100V C0G 0805	TDK Corporation	500 pcs
	<a href="#">CGJ4C2C0G2A681J060AA</a>	CAP CER 680PF 100V C0G 0805	TDK Corporation	500 pcs
	<a href="#">CGJ4F3C0G2D122J085AA</a>	CAP CER 1200PF 200V C0G 0805	TDK Corporation	500 pcs
	<a href="#">CGJ4C2C0G2A221J060AA</a>	CAP CER 220PF 100V C0G 0805	TDK Corporation	500 pcs
	<a href="#">CGJ4C2C0G2A391J060AA</a>	CAP CER 390PF 100V C0G 0805	TDK Corporation	500 pcs
	<a href="#">CGJ4F3C0G2D102J085AA</a>	CAP CER 1000PF 200V C0G 0805	TDK Corporation	500 pcs
	<a href="#">CGJ4C2C0G2A271J060AA</a>	CAP CER 270PF 100V C0G 0805	TDK Corporation	500 pcs
	<a href="#">CGJ4F2C0G2A182J085AA</a>	CAP CER 1800PF 100V C0G 0805	TDK Corporation	500 pcs
	<a href="#">CGJ4C2C0G2A152J060AA</a>	CAP CER 1500PF 100V C0G 0805	TDK Corporation	500 pcs
	<a href="#">CGJ4C2C0G2A181J060AA</a>	CAP CER 180PF 100V C0G 0805	TDK Corporation	500 pcs
	<a href="#">CGJ4J1X7R1E335K125AC</a>	CAP CER 3.3UF 25V X7R 0805	TDK Corporation	500 pcs
	<a href="#">CGJ4J1X7R0J685K125AC</a>	CAP CER 6.8UF 6.3V X7R 0805	TDK Corporation	500 pcs
	<a href="#">CGJ4F2C0G2A222J085AA</a>	CAP CER 2200PF 100V C0G 0805	TDK Corporation	500 pcs
	<a href="#">CGJ4F3C0G2D152J085AA</a>	CAP CER 1500PF 200V C0G 0805	TDK Corporation	500 pcs
	<a href="#">CGJ4J1X7R0J106K125AC</a>	CAP CER 10UF 6.3V X7R 0805	TDK Corporation	500 pcs
	<a href="#">CGJ4C2C0G2A471J060AA</a>	CAP CER 470PF 100V C0G 0805	TDK Corporation	500 pcs
	<a href="#">CGJ4C3C0G2D821J060AA</a>	CAP CER 820PF 200V C0G 0805	TDK Corporation	500 pcs
	<a href="#">CGJ4F2C0G1H153J085AA</a>	CAP CER 0.015UF 50V C0G 0805	TDK Corporation	500 pcs
	<a href="#">CGJ4C2C0G2A561J060AA</a>	CAP CER 560PF 100V C0G 0805	TDK Corporation	500 pcs

IC Chips & IGBT Module - Hot Stock Part Number				
<a href="#">CGJ4C2C0G1H332J060AA</a>	<a href="#">CGJ4C2C0G1H391J060AA</a>	<a href="#">CGJ4C2C0G1H392J060AA</a>	<a href="#">CGJ4C2C0G1H471J060AA</a>	<a href="#">CGJ4C2C0G1H472J060AA</a>
<a href="#">CGJ4C2C0G1H561J060AA</a>	<a href="#">CGJ4C2C0G1H562J060AA</a>	<a href="#">CGJ4C2C0G1H681J060AA</a>	<a href="#">CGJ4C2C0G1H682J060AA</a>	<a href="#">CGJ4C2C0G1H821J060AA</a>
<a href="#">CGJ4C2C0G1H822J060AA</a>	<a href="#">CGJ4C2C0G2A101J060AA</a>	<a href="#">CGJ4C2C0G2A102J060AA</a>	<a href="#">CGJ4C2C0G2A121J060AA</a>	<a href="#">CGJ4C2C0G2A122J060AA</a>
<a href="#">CGJ4C2C0G2A151J060AA</a>	<a href="#">CGJ4C2C0G2A152J060AA</a>	<a href="#">CGJ4C2C0G2A181J060AA</a>	<a href="#">CGJ4C2C0G2A221J060AA</a>	<a href="#">CGJ4C2C0G2A271J060AA</a>
<a href="#">CGJ4C2C0G2A331J060AA</a>	<a href="#">CGJ4C2C0G2A391J060AA</a>	<a href="#">CGJ4C2C0G2A471J060AA</a>	<a href="#">CGJ4C2C0G2A561J060AA</a>	<a href="#">CGJ4C2C0G2A681J060AA</a>
<a href="#">CGJ4C3C0G2D821J060AA</a>	<a href="#">CGJ4F2C0G1H153J085AA</a>	<a href="#">CGJ4F2C0G2A182J085AA</a>	<a href="#">CGJ4F2C0G2A222J085AA</a>	<a href="#">CGJ4F3C0G2D102J085AA</a>
<a href="#">CGJ4F3C0G2D122J085AA</a>	<a href="#">CGJ4F3C0G2D152J085AA</a>	<a href="#">CGJ4J1X7R0J106K125AC</a>	<a href="#">CGJ4J1X7R0J685K125AC</a>	<a href="#">CGJ4J1X7R1E335K125AC</a>
<a href="#">CGJ4J1X7R1E475K125AC</a>	<a href="#">CGJ4J2C0G1H223J125AA</a>	<a href="#">CGJ4J2C0G1H333J125AA</a>	<a href="#">CGJ4J2C0G2A272J125AA</a>	<a href="#">CGJ4J2C0G2A332J125AA</a>
<a href="#">CGJ4J2C0G2A392J125AA</a>	<a href="#">CGJ4J2C0G2A472J125AA</a>	<a href="#">CGJ4J2X7R0J105K125AA</a>	<a href="#">CGJ4J2X7R0J105K125AA</a>	<a href="#">CGJ4J2X7R0J155K125AA</a>
<a href="#">CGJ4J2X7R0J224K125AA</a>	<a href="#">CGJ4J2X7R0J225K125AA</a>	<a href="#">CGJ4J2X7R0J334K125AA</a>	<a href="#">CGJ4J2X7R0J335K125AA</a>	<a href="#">CGJ4J2X7R0J474K125AA</a>