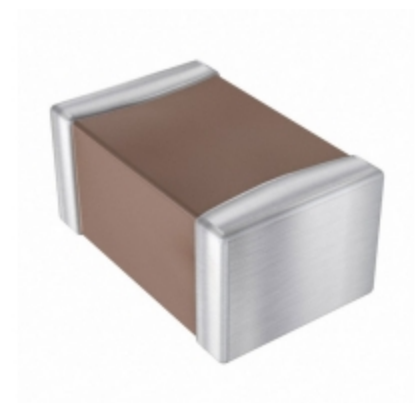


| 08051A510KAT2A | |
|----------------------|---|
| Part Number | 08051A510KAT2A |
| Manufacturer | AVX Corporation |
| Description | CAP CER 51PF 100V NP0 0805 |
| Quantity Available | 500 pcs in stock |
| Datasheets | |
| 08051A510KAT2A Price | Request Price & Lead Time Online or Email us: Info@ariat-tech.com |


[GET A QUOTE](#)

| Technical Information of 08051A510KAT2A | | | |
|---|---------------------------------|-------------------------|---------------------------------------|
| Manufacturer Part Number | 08051A510KAT2A | Category | Capacitors |
| Manufacturer | AVX Corporation | Description | CAP CER 51PF 100V NP0 0805 |
| Package / Case | Tape & Reel (TR) | Quantity Available | 500 |
| Series | - | Voltage - Rated | 100V |
| Operating Temperature | -55°C ~ 125°C | Ratings | - |
| Mounting Type | Surface Mount, MLCC | Size / Dimension | 0.079" L x 0.049" W (2.01mm x 1.25mm) |
| Height - Seated (Max) | - | Features | - |
| Capacitance | 51pF | Tolerance | ±10% |
| Applications | General Purpose | Lead Spacing | - |
| Package / Case | 0805 (2012 Metric) | Temperature Coefficient | C0G, NP0 |
| Thickness (Max) | 0.037" (0.94mm) | Lead Style | - |
| Failure Rate | - | Packaging | Tape & Reel (TR) |

08051A510KAT2A 500pcs New and Original in Stock, Find 08051A510KAT2A Stock, Datasheet, PDF, Inventory at Ariat-Tech.com Online, Order 08051A510KAT2A AVX Corporation with warranted and confidence. RFQ 08051A510KAT2A : Info@Ariat-Tech.com

| Related parts for 08051A510KAT2A | | | | |
|----------------------------------|--------------------------------|--------------------------------|---------------------------------------|---------|
| Image | Part Number | Description | Manufacturer | Qty |
| | 08051A560FA12A | CAP CER 56PF 100V NP0 0805 | AVX Corporation | 500 pcs |
| | 08051A510MAT4A | CAP CER 51PF 100V NP0 0805 | AVX Corporation | 500 pcs |
| | 08051A500FAT2A | CAP CER 50PF 100V NP0 0805 | AVX Corporation | 500 pcs |
| | 08051A560FAT4A | CAP CER 56PF 100V C0G/NP0 0805 | AVX Corporation | 500 pcs |
| | 08051A511FAT2A | CAP CER 510PF 100V NP0 0805 | AVX Corporation | 500 pcs |
| | 08051A560GAT2A | CAP CER 56PF 100V C0G/NP0 0805 | Avago Technologies (Broadcom Limited) | 500 pcs |
| | 08051A560GAT2A | CAP CER 56PF 100V C0G/NP0 0805 | AVX Corporation | 500 pcs |
| | 08051A511GAT2A | CAP CER 510PF 100V NP0 0805 | AVX Corporation | 500 pcs |
| | 08051A500JAT2A | CAP CER 50PF 100V NP0 0805 | AVX Corporation | 500 pcs |
| | 08051A4R7JAT4A | CAP CER 4.7PF 100V NP0 0805 | AVX Corporation | 500 pcs |
| | 08051A511JAT2A | CAP CER 510PF 100V NP0 0805 | AVX Corporation | 500 pcs |
| | 08051A510JAT2A | CAP CER 51PF 100V C0G/NP0 0805 | AVX Corporation | 500 pcs |
| | 08051A560FAT2A | CAP CER 56PF 100V C0G/NP0 0805 | AVX Corporation | 500 pcs |
| | 08051A510JAT4A | CAP CER 51PF 100V C0G/NP0 0805 | AVX Corporation | 500 pcs |
| | 08051A500GAT2A | CAP CER 50PF 100V NP0 0805 | AVX Corporation | 500 pcs |
| | 08051A510FAT2A | CAP CER 51PF 100V NP0 0805 | AVX Corporation | 500 pcs |
| | 08051A510GAT2A | CAP CER 51PF 100V NP0 0805 | AVX Corporation | 500 pcs |
| | 08051A510JAJ2A | CAP CER 51PF 100V NP0 0805 | AVX Corporation | 500 pcs |
| | 08051A560GAT4A | CAP CER 56PF 100V C0G/NP0 0805 | AVX Corporation | 500 pcs |
| | 08051A510JAT2A | CAP CER 51PF 100V NP0 0805 | AVX Corporation | 500 pcs |

IC Chips & IGBT Module - Hot Stock Part Number

| | | | | |
|--------------------------------|--------------------------------|--------------------------------|--------------------------------|--------------------------------|
| 08051A471KAT4A | 08051A4R0BAT2A | 08051A4R0CAT2A | 08051A4R0CAT4A | 08051A4R0DAT2A |
| 08051A4R3BAT2A | 08051A4R3CAT2A | 08051A4R3DAT2A | 08051A4R7BAT2A | 08051A4R7BAT4A |
| 08051A4R7CAT2A | 08051A4R7CAT2M | 08051A4R7CAT4A | 08051A4R7CAT9A | 08051A4R7DAT2A |
| 08051A4R7JAT4A | 08051A500FAT2A | 08051A500GAT2A | 08051A500JAT2A | 08051A510FAT2A |
| 08051A510GAT2A | 08051A510J4T2A | 08051A510JAJ2A | 08051A510JAT2A | 08051A510JAT4A |
| 08051A510MAT4A | 08051A511FAT2A | 08051A511GAT2A | 08051A511JAT2A | 08051A560FA12A |
| 08051A560FAT2A | 08051A560FAT4A | 08051A560GAT2A | 08051A560GAT2A | 08051A560GAT4A |
| 08051A560JAT2A | 08051A560JAT4A | 08051A560JAT9A | 08051A560KAT2A | 08051A561FAT2A |
| 08051A561GAT2A | 08051A561J4T2A | 08051A561JA16A | 08051A561JAJ2A | 08051A561JAT2A |
| 08051A561KAT2A | 08051A580FAT2A | 08051A5R0BAT2A | 08051A5R0CAT2A | 08051A5R0DAT2A |