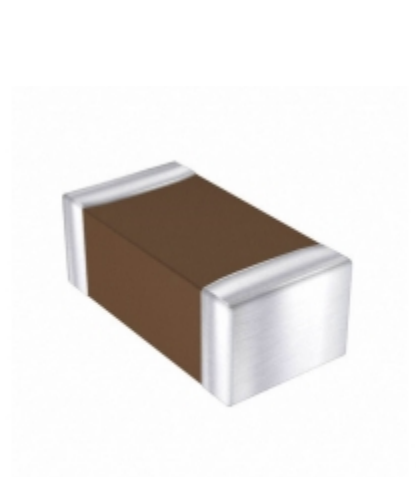


LT024D105MAT2C	
Part Number	<a href="#">LT024D105MAT2C</a>
Manufacturer	<a href="#">AVX Corporation</a>
Description	CAP CER 1UF 4V X5R 0402
Quantity Available	500 pcs in stock
Datasheets	
LT024D105MAT2C Price	<a href="#">Request Price &amp; Lead Time Online</a> or Email us: <a href="mailto:Info@ariat-tech.com">Info@ariat-tech.com</a>


[GET A QUOTE](#)

Technical Information of LT024D105MAT2C			
Manufacturer Part Number	<a href="#">LT024D105MAT2C</a>	Category	<a href="#">Capacitors</a>
Manufacturer	<a href="#">AVX Corporation</a>	Description	CAP CER 1UF 4V X5R 0402
Package / Case	Tape & Reel (TR)	Quantity Available	500
Series	LT	Voltage - Rated	4V
Operating Temperature	-55°C ~ 85°C	Ratings	-
Mounting Type	Surface Mount, MLCC	Size / Dimension	0.039" L x 0.020" W (1.00mm x 0.50mm)
Height - Seated (Max)	-	Features	Low Profile
Capacitance	1µF	Tolerance	±20%
Applications	General Purpose	Lead Spacing	-
Package / Case	0402 (1005 Metric)	Temperature Coefficient	X5R
Thickness (Max)	0.014" (0.36mm)	Lead Style	-
Failure Rate	-	Packaging	Tape & Reel (TR)

LT024D105MAT2C 500pcs New and Original in Stock, Find LT024D105MAT2C Stock, Datasheet, PDF, Inventory at Ariat-Tech.com Online, Order LT024D105MAT2C AVX Corporation with warrantied and confidence. RFQ LT024D105MAT2C : [Info@Ariat-Tech.com](mailto:Info@Ariat-Tech.com)

Related parts for LT024D105MAT2C				
Image	Part Number	Description	Manufacturer	Qty
	<a href="#">LT063D475MAT2X</a>	CAP CER 4.7UF 25V X5R 1206	AVX Corporation	500 pcs
	<a href="#">LT06YD105MAT2X</a>	CAP CER 1UF 16V X5R 1206	AVX Corporation	500 pcs
	<a href="#">LT05ZD106MAT2X</a>	CAP CER 10UF 10V X5R 0805	AVX Corporation	500 pcs
	<a href="#">LT056D106MAT2X</a>	CAP CER 10UF 6.3V X5R 0805	AVX Corporation	500 pcs
	<a href="#">LT034D475MAT2S</a>	CAP CER 4.7UF 4V X5R 0603	AVX Corporation	500 pcs
	<a href="#">LT05YD475MAT2X</a>	CAP CER 4.7UF 16V X5R 0805	AVX Corporation	500 pcs
	<a href="#">LT053D105MAT2X</a>	CAP CER 1UF 25V X5R 0805	AVX Corporation	500 pcs
	<a href="#">LT05ZD475MAT2S</a>	CAP CER 4.7UF 10V X5R 0805	AVX Corporation	500 pcs
	<a href="#">LT066D106KAT2X</a>	CAP CER 10UF 6.3V X5R 1206	AVX Corporation	500 pcs
	<a href="#">LT02ZC223KAT2C</a>	CAP CER 0.022UF 10V X7R 0402	AVX Corporation	500 pcs
	<a href="#">LT063D105KAT2X</a>	CAP CER 1UF 25V X5R 1206	AVX Corporation	500 pcs
	<a href="#">LT02ZD105MAT2S</a>	CAP CER 1UF 10V X5R 0402	AVX Corporation	500 pcs
	<a href="#">LT056DET2S00-1F000</a>	LCD 5.6INCH 1024X600 W-SVGA	Toshiba Semiconductor and Storage	500 pcs
	<a href="#">LT02YC103KAT2C</a>	CAP CER 10000PF 16V X7R 0402	AVX Corporation	500 pcs
	<a href="#">LT03YD105KAT2S</a>	CAP CER 1UF 16V X5R 0603	AVX Corporation	500 pcs
	<a href="#">LT06YD106MAT2W</a>	CAP CER 10UF 16V X5R 1206	AVX Corporation	500 pcs
	<a href="#">LT024D225MAT2S</a>	CAP CER 2.2UF 4V X5R 0402	AVX Corporation	500 pcs
	<a href="#">LT05ZD225KAT2X</a>	CAP CER 2.2UF 10V X5R 0805	AVX Corporation	500 pcs
	<a href="#">LT036D225MAT2S</a>	CAP CER 2.2UF 6.3V X5R 0603	AVX Corporation	500 pcs
	<a href="#">LT05YD225MAT2X</a>	CAP CER 2.2UF 16V X5R 0805	AVX Corporation	500 pcs

**IC Chips & IGBT Module - Hot Stock Part Number**

<a href="#">06031C182M4T2A</a>	<a href="#">ACB453215-500</a>	<a href="#">ADM709RAR-REEL</a>	<a href="#">AT89C5131A-S3SIM</a>	<a href="#">BAS40LT1G</a>
<a href="#">BB824-2-GS08</a>	<a href="#">C1608X7R1H153M080AA</a>	<a href="#">CL10B332KC84PEC</a>	<a href="#">EVK81-060B</a>	<a href="#">G3VM-601DY</a>
<a href="#">GJM1555C1H8R3BB01D</a>	<a href="#">GMSI-010060SND-EP2</a>	<a href="#">GQM2195C2E4R7CB12D</a>	<a href="#">GRM033R71C332KA88D</a>	<a href="#">GRM1886T1H910JD01D</a>
<a href="#">LM1085IT-12</a>	<a href="#">LT024D225MAT2S</a>	<a href="#">LT02YC103KAT2C</a>	<a href="#">LT02ZC223KAT2C</a>	<a href="#">LT02ZD105MAT2S</a>
<a href="#">LT034D475MAT2S</a>	<a href="#">LT036D225MAT2S</a>	<a href="#">LT03YD105KAT2S</a>	<a href="#">LT053D105MAT2X</a>	<a href="#">LT056D106MAT2X</a>
<a href="#">LT05YD225MAT2X</a>	<a href="#">LT05YD475MAT2X</a>	<a href="#">LT05ZD106MAT2X</a>	<a href="#">LT05ZD225KAT2X</a>	<a href="#">LT05ZD475MAT2S</a>
<a href="#">LT063D105KAT2X</a>	<a href="#">LT063D475MAT2X</a>	<a href="#">LT066D106KAT2X</a>	<a href="#">LT06YD105MAT2X</a>	<a href="#">LT06YD106MAT2W</a>
<a href="#">LT06YD106MAT2W</a>	<a href="#">LT06YD475KAT2W</a>	<a href="#">LT06YD475MAT2W</a>	<a href="#">LT06ZD106MAT2W</a>	<a href="#">LT06ZD106MAT2W</a>
<a href="#">MBA-18LH</a>	<a href="#">MG150J7CSA0A</a>	<a href="#">N510CH16</a>	<a href="#">OPA1612AIDR</a>	<a href="#">PHD50N03LT4</a>
<a href="#">QTLP601CEBTR</a>	<a href="#">SST29EE010-90-4I-NHE</a>	<a href="#">ST72F321BJ9T6</a>	<a href="#">TB1300L-13-F</a>	<a href="#">UA723CDR</a>