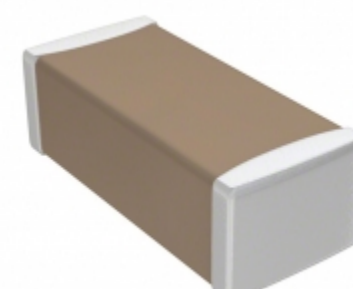


| C1608C0G1H271J/10       |                                                                                                                                |
|-------------------------|--------------------------------------------------------------------------------------------------------------------------------|
| Part Number             | C1608C0G1H271J/10                                                                                                              |
| Manufacturer            | TDK Corporation                                                                                                                |
| Description             | CAP CER 270PF 50V C0G 0603                                                                                                     |
| Quantity Available      | 500 pcs in stock                                                                                                               |
| Datasheets              |                                                                                                                                |
| C1608C0G1H271J/10 Price | <a href="#">Request Price &amp; Lead Time Online</a> or Email us: <a href="mailto:Info@ariat-tech.com">Info@ariat-tech.com</a> |



[GET A QUOTE](#)

| Technical Information of C1608C0G1H271J/10 |                     |                         |                                       |
|--------------------------------------------|---------------------|-------------------------|---------------------------------------|
| Manufacturer Part Number                   | C1608C0G1H271J/10   | Category                | Capacitors                            |
| Manufacturer                               | TDK Corporation     | Description             | CAP CER 270PF 50V C0G 0603            |
| Package / Case                             | Tape & Reel (TR)    | Quantity Available      | 500                                   |
| Series                                     | C                   | Voltage - Rated         | 50V                                   |
| Operating Temperature                      | -55°C ~ 125°C       | Ratings                 | -                                     |
| Mounting Type                              | Surface Mount, MLCC | Size / Dimension        | 0.063" L x 0.031" W (1.60mm x 0.80mm) |
| Height - Seated (Max)                      | -                   | Features                | -                                     |
| Capacitance                                | 270pF               | Tolerance               | ±5%                                   |
| Applications                               | General Purpose     | Lead Spacing            | -                                     |
| Package / Case                             | 0603 (1608 Metric)  | Temperature Coefficient | C0G, NP0                              |
| Thickness (Max)                            | 0.037" (0.95mm)     | Lead Style              | -                                     |
| Failure Rate                               | -                   | Packaging               | Tape & Reel (TR)                      |

C1608C0G1H271J/10 500pcs New and Original in Stock, Find C1608C0G1H271J/10 Stock, Datasheet, PDF, Inventory at Ariat-Tech.com Online, Order C1608C0G1H271J/10 TDK Corporation with warrantied and confidence. RFQ C1608C0G1H271J/10 : [Info@Ariat-Tech.com](mailto:Info@Ariat-Tech.com)

| Related parts for C1608C0G1H271J/10 |                     |                             |                 |         |
|-------------------------------------|---------------------|-----------------------------|-----------------|---------|
| Image                               | Part Number         | Description                 | Manufacturer    | Qty     |
|                                     | C1608C0G1H240J      | CAP CER 24PF 50V C0G 0603   | TDK Corporation | 500 pcs |
|                                     | C1608C0G1H241J      | CAP CER 240PF 50V C0G 0603  | TDK Corporation | 500 pcs |
|                                     | C1608C0G1H271J080AA | CAP CER 270PF 50V C0G 0603  | TDK Corporation | 500 pcs |
|                                     | C1608C0G1H222J080AA | CAP CER 2200PF 50V C0G 0603 | TDK Corporation | 500 pcs |
|                                     | C1608C0G1H301J      | CAP CER 300PF 50V C0G 0603  | TDK Corporation | 500 pcs |
|                                     | C1608C0G1H272J080AA | CAP CER 2700PF 50V C0G 0603 | TDK Corporation | 500 pcs |
|                                     | C1608C0G1H270J/10   | CAP CER 27PF 50V C0G 0603   | TDK Corporation | 500 pcs |
|                                     | C1608C0G1H2R2C      | CAP CER 2.2PF 50V C0G 0603  | TDK Corporation | 500 pcs |
|                                     | C1608C0G1H222J/10   | CAP CER 2200PF 50V C0G 0603 | TDK Corporation | 500 pcs |
|                                     | C1608C0G1H221J/10   | CAP CER 220PF 50V C0G 0603  | TDK Corporation | 500 pcs |
|                                     | C1608C0G1H222K080AA | CAP CER 2200PF 50V C0G 0603 | TDK Corporation | 500 pcs |
|                                     | C1608C0G1H2R7B      | CAP CER 2.7PF 50V C0G 0603  | TDK Corporation | 500 pcs |
|                                     | C1608C0G1H2R2B      | CAP CER 2.2PF 50V C0G 0603  | TDK Corporation | 500 pcs |
|                                     | C1608C0G1H2R7C      | CAP CER 2.7PF 50V C0G 0603  | TDK Corporation | 500 pcs |
|                                     | C1608C0G1H221K080AA | CAP CER 220PF 50V C0G 0603  | TDK Corporation | 500 pcs |
|                                     | C1608C0G1H221J080AA | CAP CER 220PF 50V C0G 0603  | TDK Corporation | 500 pcs |
|                                     | C1608C0G1H300J      | CAP CER 30PF 50V C0G 0603   | TDK Corporation | 500 pcs |
|                                     | C1608C0G1H271K080AA | CAP CER 270PF 50V C0G 0603  | TDK Corporation | 500 pcs |
|                                     | C1608C0G1H270J080AA | CAP CER 27PF 50V C0G 0603   | TDK Corporation | 500 pcs |
|                                     | C1608C0G1H272K080AA | CAP CER 2700PF 50V C0G 0603 | TDK Corporation | 500 pcs |

IC Chips & IGBT Module - Hot Stock Part Number

|                     |                     |                     |                     |                     |
|---------------------|---------------------|---------------------|---------------------|---------------------|
| C1608C0G1H182K080AA | C1608C0G1H1R2B      | C1608C0G1H1R2C      | C1608C0G1H1R5B      | C1608C0G1H1R5C080AA |
| C1608C0G1H1R8B      | C1608C0G1H1R8C      | C1608C0G1H200J      | C1608C0G1H201J      | C1608C0G1H220F080AA |
| C1608C0G1H220G080AA | C1608C0G1H220J/10   | C1608C0G1H220J080AA | C1608C0G1H221F080AA | C1608C0G1H221G080AA |
| C1608C0G1H221J/10   | C1608C0G1H221J080AA | C1608C0G1H221K080AA | C1608C0G1H222J/10   | C1608C0G1H222J080AA |
| C1608C0G1H222K080AA | C1608C0G1H240J      | C1608C0G1H241J      | C1608C0G1H270J/10   | C1608C0G1H270J080AA |
| C1608C0G1H271J080AA | C1608C0G1H271K080AA | C1608C0G1H272J080AA | C1608C0G1H272K080AA | C1608C0G1H2R2B      |
| C1608C0G1H2R2C      | C1608C0G1H2R7B      | C1608C0G1H2R7C      | C1608C0G1H300J      | C1608C0G1H301J      |
| C1608C0G1H330F080AA | C1608C0G1H330G080AA | C1608C0G1H330J/10   | C1608C0G1H330J080AA | C1608C0G1H331F080AA |
| C1608C0G1H331G080AA | C1608C0G1H331J/10   | C1608C0G1H331J080AA | C1608C0G1H331JT000N | C1608C0G1H331K080AA |
| C1608C0G1H332J080AA | C1608C0G1H332K080AA | C1608C0G1H360J      | C1608C0G1H361J      | C1608C0G1H390J/10   |